

## Packaging sustainable solutions

# LusterCote®

At Sappi, we don't make you choose between your commitment to sustainability and optimal packaging. When LusterCote is part of your packaging solution, you're sourcing a paper-based product—made from renewable resources—that's also recyclable, helping your brand stand out on the shelf.

### Sustainable sourcing

As a natural resource company, Sappi has always focused on promoting the long-term vitality of forests while boosting local economies. Our wood suppliers harvest trees using a system of Best Management Practices (BMPs). Our sourcing practices also meet the requirements of the leading global certifications standards including the Forest Stewardship Council® (FSC®-C014955), the Sustainable Forestry Initiative® (SFI®) program and the Programme for the Endorsement of Forest Certification™ (PEFC™)³.

### Lean manufacturing

Energy use is an ongoing topic of global concern, so Sappi remains committed to decreasing energy consumption and improving process efficiencies across our entire manufacturing operation. Because fossil fuel use is closely linked to climate change and is a major cost driver in manufacturing paper products, we derive most of our energy from renewable sources and set a goal to reduce energy intensity by five percent.

We're also targeting a 10 percent reduction in raw material losses in our pulp mill, and a five percent reduction in our paper mills, by 2020. Efficient use of raw materials means greater cost savings and reduced environmental impact.

### Safe use

Sappi's LusterCote paper has superior printability and ink holdout using a wide variety of inks and coatings. Heavyweight **LusterCote (70, 80 and 95lb)** has been designed to provide superior conversion and lamination performance on a wide range of commercial C1S applications such as litho labels, envelopes, book dust jackets, set-up boxes and point-of-purchase displays.

Lightweight **LusterCote (55, 60 and 65lb)** is produced with online finishing, which enhances sheet stiffness, stability, and performance at the converter, on press and in downstream operations. The applications of the LusterCote (55, 60, and 65lb) include cut & stack labels, banderoles, metallizing, and envelopes. LusterCote complies with FDA regulations for food contact, with restrictions in certain food contact applications¹.



### Recyclable paper

Our LusterCote sheet is often laminated to other materials, such as recycled corrugate, to deliver a 100% recyclable end product. Additionally, paper and paperboard have high recycling rates—nearly seven times that of plastic. LusterCote is also used in metal cans and glass jar label applications, which have nearly three times greater recovery rates over plastic².

Sappi continues to encourage initiatives to improve product labeling for how to recycle packaging, such as rinsing cans or removing paper labels. We're strong proponents of educational outreach and programs that lead to higher recovery of paper and other recyclable materials.



1 FDA Statement of Compliance for LusterCote available on request.

2 EPA Recycling Statistics from Advancing Sustainable Materials Management: 2014 Fact Sheet, published in November 2016.

3 LusterCote is sold standard with SFI Certified Sourcing and either an FSC, SFI or PEFC Chain-of-Custody (CoC) claim, based upon customer request, pending availability of credits.

## LusterCote product specifications

If you care about the performance of your packaging, look no further. Sappi's LusterCote is a packaging paper designed specifically for challenging converting applications.

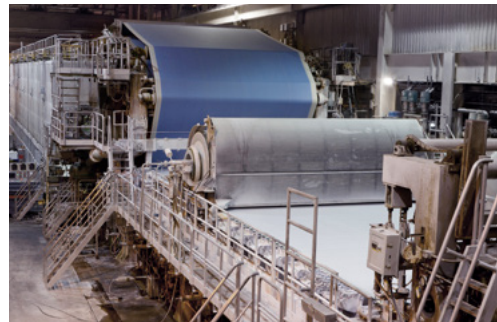
| LusterCote       |                |                             |      |      |      |                            |      |      |                              |            |
|------------------|----------------|-----------------------------|------|------|------|----------------------------|------|------|------------------------------|------------|
| PROPERTY         | UNITS          | SOMERSET MILL TYPICAL VALUE |      |      |      | CLOQUET MILL TYPICAL VALUE |      |      | TEST METHOD                  |            |
| Basis Weight     | lb/3300 sf     | 55                          | 60   | 65   | 70   | 70                         | 80   | 95   |                              | TAPPI T410 |
| Basis Weight     | gsm            | 81                          | 89   | 96   | 104  | 104                        | 118  | 141  |                              | TAPPI T410 |
| Brightness       | % reflectance  | 88                          | 88   | 88   | 89   | 90                         | 90   | 90   |                              | TAPPI T452 |
| Gloss            | % reflectance  | 68                          | 68   | 68   | 70   | 70                         | 70   | 70   | TAPPI T480—75 Degree Gloss   |            |
| Opacity          | %              | 88                          | 89.5 | 90   | 91   | 91.5                       | 93.0 | 95.0 |                              | TAPPI T425 |
| Smoothness       | microns        | 0.8                         | 0.8  | 0.8  | 0.8  | 0.8                        | 0.8  | 0.8  | TAPPI T555—Parker Print Surf |            |
| Caliper          | .001 in (mils) | 2.9                         | 3.1  | 3.4  | 3.8  | 3.6                        | 4.0  | 4.8  |                              | TAPPI T411 |
| Thickness        | microns        | 74                          | 79   | 86   | 97   | 91                         | 102  | 123  |                              | TAPPI T411 |
| Tensile, CD      | lb/in          | 16.0                        | 17.0 | 18.0 | 26.0 | 17.0                       | 20.0 | 22.0 |                              | TAPPI T494 |
| Tear, MD         | g-force        | 51.0                        | 56.0 | 61.0 | 70.0 | 56.0                       | 68.0 | 76.0 | TAPPI T414—Elmendorf Tear    |            |
| Cobb Size (2min) | gsm            | 26                          | 26   | 75   | <35  | <35                        | <35  | <35  |                              | TAPPI T441 |

## World-class manufacturing



### Paper Machine #2 at Sappi's Somerset Mill

Originally built in 1986  
 Major rebuild in 2002  
 Online coating and calendering  
 40 to 60lb coated two-side grades  
 41 to 55lb (tag) LusterPrint  
 55 to 70lb LusterCote  
 280 inches wide and over 500 feet long  
 Production speeds up to 3,500 ft/min  
 Production capacity of 225,000 tpy



### Paper Machine #12 at Sappi's Cloquet Mill

Originally built in 1988  
 Major rebuilds in 2005, 2013, and 2017  
 Online pre-coating  
 Offline top-coating and calendering  
 60 to 146lb coated two-side grades  
 70, 80 and 95lb LusterCote  
 188 inches wide and 350 feet long  
 Production speeds up to 2,500 ft/min  
 Production capacity of 190,000 tpy

Sappi has a dedicated direct sales team focused on selling into the packaging segment. Supported by an incredible inside sales team, you can count on Sappi to deliver outstanding customer service. Sappi's technical services group can help with all aspects of printing and converting process. A national team of representatives is available for trials, product qualification or troubleshooting. Our help line is staffed by experts around the clock at 1.877.SappiHelp.

**RECYCLE**

For more information about Sappi's sustainability performance, please visit [sappi.com](http://sappi.com).



The data, specifications and/or certifications provided herein are current as of the date of printing and may change without notice at Sappi's discretion.

Sappi is a trademark of Sappi Limited. MCCOY, LUSTERPRINT and LUSTERCOTE are registered trademarks of Sappi North America.

© 2019 Sappi North America. All Rights Reserved.

Effective 12.19  
 PRO-6293

Sappi North America  
 255 State Street  
 Boston MA 02109

877.727.7401  
[www.sappi.com](http://www.sappi.com)

**sappi**