

Performance for packaging

LusterCote™

70lb / 80lb / 95lb

Delivering your brand to the world.

Developed to deliver the brand owner's message with excellence, LusterCote is a coated one-side (C1S) product offering the consistently high level of brightness, print performance and production efficiency that you have come to expect from Sappi.

Heavyweight **LusterCote (70, 80 and 95lb)** has been designed to provide superior performance on a wide range of commercial C1S applications such as litho label, envelope, book dust jacket, set-up boxes and point-of-purchase display. In combination with LusterCote 55 to 65lb, these grades also extend Sappi's offering for cut & stack labels and banderole.

Press operators, converters and laminators alike are excited by LusterCote's consistent production performance. Brand owners and graphic designers will love the print fidelity for which Sappi is known. Designed with a unique backside finish, LusterCote performs with excellence in a wide variety of converting applications.

Do you have a unique application?

Contact us at 1-877-727-7401.

LusterCote					
PROPERTY	UNITS	TYPICAL VALUE			TEST METHOD
Basis Weight	lb/3300 sf	70	80	95	TAPPI T410
Basis Weight	gsm	103	118	140	TAPPI T410
Brightness	% reflectance	90	90	90	TAPPI T452
Gloss	% reflectance	70	70	70	TAPPI T480—75 Degree Gloss
Opacity	%	91.5	93.0	95.0	TAPPI T425
Smoothness	microns	0.8	0.8	0.8	TAPPI T555—Parker Print Surf
Caliper	.001 in (mils)	3.6	4.0	4.8	TAPPI T411
Thickness	microns	91	102	123	TAPPI T411
Tensile, CD	lb/in	17.0	20.0	22.0	TAPPI T494
Tear, MD	g-force	56.0	68.0	76.0	TAPPI T414—Elmendorf Tear
Cobb Size (2min)	gsm	<35	<35	<35	TAPPI T441

LusterCote delivers:

1 Product performance

Superior printability and ink holdout using both conventional and UV curable inks and a wide variety of aqueous coatings. Excellent runnability on Offset, Flexographic and Gravure printing presses, including wide-format, multi-color sheet fed presses. Downstream, LusterCote offers excellent rotary and flat-bed cutting and laminating qualities with a wide range of adhesives.

2 A dedicated sales team

Sappi has a dedicated direct sales team focused on selling into the packaging segment. Supported by an incredible inside sales team, you can count on Sappi to deliver outstanding customer service.

3 Strong technical support

Sappi's technical services group can help with all aspects of printing and converting processes. A national team of representatives is available for trials, product qualification or troubleshooting. Our help line is staffed by experts around the clock at 1-877-SappiHelp.

4 E-Commerce capabilities

You can track and trace shipments, print documents (order confirmations, invoices and shipping docs) and look up stock availability, all from your desktop or mobile device. Sappi's e-commerce capabilities are always available at your convenience.

5 Made in USA

Heavyweight LusterCote is produced at Sappi's world-class manufacturing site in Cloquet, Minnesota.

6 Environmental responsibility

The Cloquet Mill is a fully integrated facility that generates over 80% of its energy from renewable resources, resulting in a low carbon footprint for LusterCote. One hundred percent of our fiber meets the SFI® Certified Sourcing standard, assuring that wood is sourced responsibly.

7 Sustainability leadership

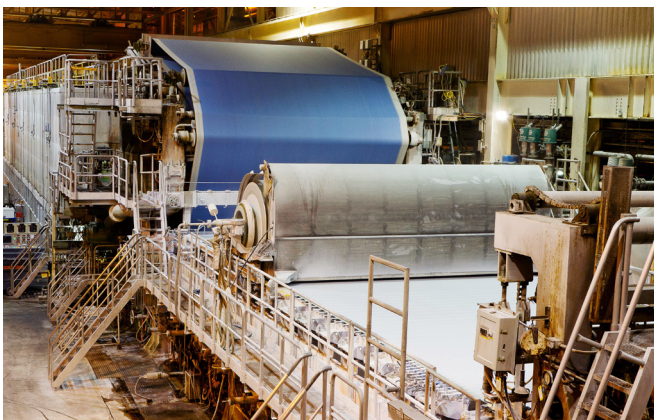
Sappi is an active member of the Sustainable Packaging Coalition, working with other thought leaders—from landowners to brand owners—to help minimize the environmental impact of packaging products. Learn more about our sustainability efforts at sappi.com.

8 Chain of Custody certification

LusterCote is delivered with SFI® Chain of Custody certification as a standard offering. FSC® and PEFC® are also available upon request pending availability of certified fiber credits.

9 Commitment to R&D

Sappi's Technology Center in Westbrook, Maine, is dedicated to product development efforts. Chemists, engineers, physicists and materials scientists are housed together in a facility with two pilot scale coating plants and extensive analytical and testing equipment.



Paper Machine #12 at Sappi's Cloquet Mill

Originally built in 1988
Major rebuilds in 2005 and 2013
On-line pre-coating
Off-line top coating and calendering
60# through 146# coated graphics grades
70#, 80# and 95# LusterCote
188 inches wide and 350 feet long
Production speeds up to 2,500 feet per minute
Production capacity of 190,000 tons per year

**Our technical experts are on call
at 1-877-SappiHelp.**



For more information about Sappi's sustainability performance, please visit www.sappi.com

Production Notes
McCoy for HP Indigo Silk Cover
100lb/270gsm, 4-color process

800.882.4332
sappi.com

Effective 05.17

The data, specifications and/or certifications provided herein are current as of the date of printing and may change without notice in Sappi's discretion.

SAPPI is a trademark of Sappi Limited. MCCOY and LUSTERPRINT are registered trademarks and LUSTERCOTE is a trademark of Sappi North America.

© 2017 Sappi North America.
All Rights Reserved.



sappi

Sappi North America
255 State Street, Boston MA 02109

PRO - 6169